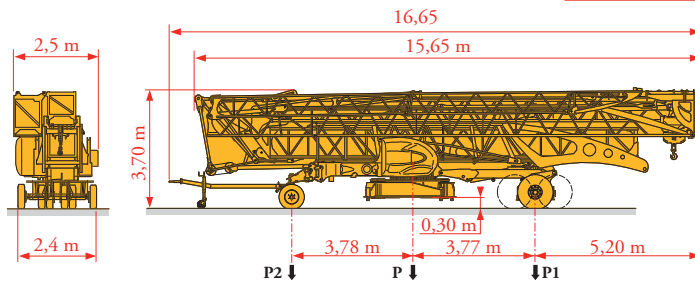


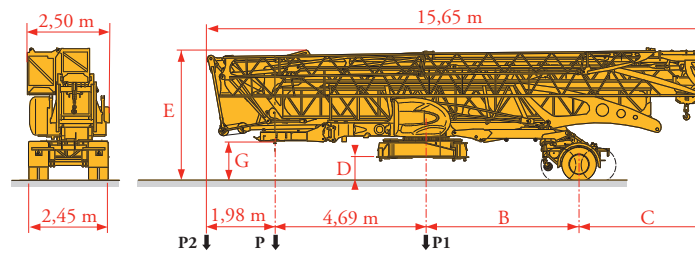
Transport  
Transport  
Transport  
Transporte  
Trasporto  
Transporte  
Транспортировка

MEM 4



	Km/h	P (kg)	P1 (kg)	P2 (kg)
DJ100/S120	10	19360	11491	7869
DJ105/S125	25	19650	11701	7949

... \*\*



	Km/h	B (m)	C (m)	D (m)	E (m)	G (m)	P (kg)	P1 (kg)	P2 (kg)
SL121/J135	25	4,20	4,78	0,70	4,10	1,30	20200	12800	7400
SL122/J215M	80	3,21	5,77	0,60	4,00	1,20	21050	15075	5975

... \*\*

**FR**

\*\*

Voir documentations techniques.

**DE**

Siehe technische Dokumentation.

**EN**

See technical documentations.

**ES**

Consulte la documentación técnica.

**IT**

Vedere la documentazione tecnica.

**PT**

Consultar documentações técnicas.

**RU**

см. техническую документацию



Document commercial non contractuel. Pour toute information technique se référer à la notice correspondante.

Unverbindliches Vertriebsdokument. Für technische Informationen, siehe die entsprechenden Anweisungen.

This commercial document is not legally binding. For any technical information, please refer to the corresponding instructions.

Documento comercial no contractual. Para cualquier información técnica, ver la noticia correspondiente.

Documento commerciale non vincolante, per tutte le informazioni tecniche fare riferimento al catalogo istruzioni.

Documento comercial não contractual. Para qualquer informação técnica complementar consultar as respectivas instruções.

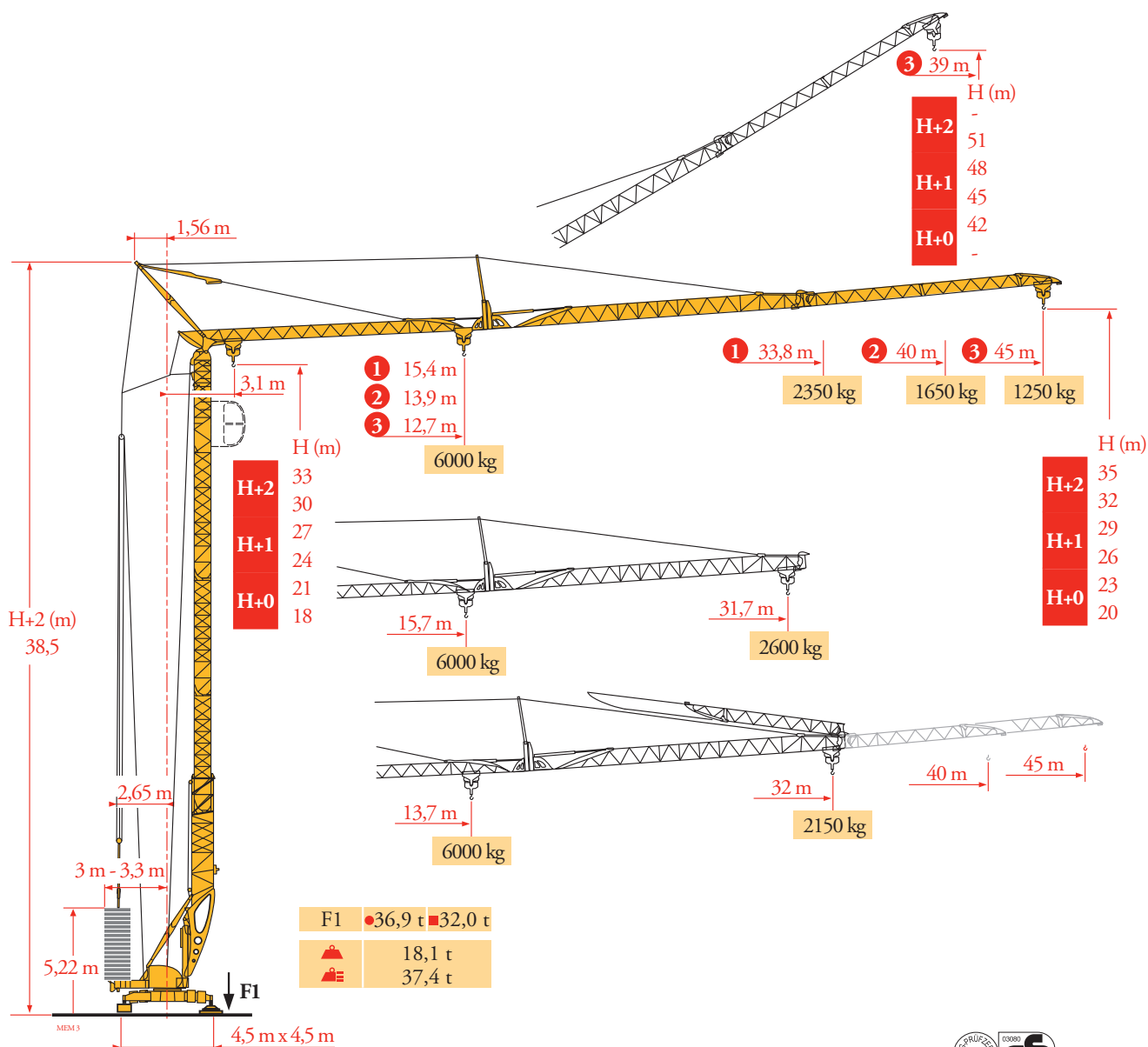
Этот коммерческий документ не является юридически обязательным. Для получения технической информации, см. соответствующие инструкции.

**Manitowoc - Americas - World Headquarters**  
2400 S. 44th Street • Manitowoc • WI 54220 USA  
Tel: +1 920 684 4410 • Fax: +1 920 652 9778

**Manitowoc - Europe, Middle East & Africa**  
Ecully, France  
18, rue de Charbonnières B.P. 173 • 69132 ECULLY Cedex • FRANCE  
Tel: +33 (0)4 72 18 20 20 • Fax: +33 (0)4 72 18 20 00

**Manitowoc - Asia Pacific**  
16F Xu Hui Yuan Building,  
1089 Zhongshan No.2 Road (S) • Shanghai 200030 China  
Tel: +86 21 6457 0066 • Fax: +86 21 6457 4955

# Potain Igo T 85



Courbes de charges  
Lastkurven  
Load diagrams  
Curvas de cargas  
Curve di carico  
Curva de cargas  
Диаграммы грузоподъемностей

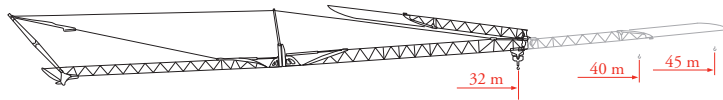
MEM 3

45 m	3,1	▶	12,7	14	16	18	20	22,4	24	26	28	30	32	34	36	38	40	42	45	m
			6000	5330	4520	3915	3445	3000	2760	2500	2285	2100	1935	1795	1670	1555	1460	1370	1250	kg
								3000	2760	2500	2285	2100	1935	1795	1670	1555	1460	1370	1250	kg

40 m	3,1	▶	13,9	16	18	20	22	24,6	26	28	30	32	34	36	38	40	m
			6000	5045	4375	3850	3430	3000	2805	2565	2355	2180	2020	1885	1760	1650	kg
								3000	2805	2565	2355	2180	2020	1885	1760	1650	kg

33,8 m	3,1	▶	15,4	18	20	22	24	26	27,6	30	32	33,8	m
			6000	4995	4405	3930	3545	3220	3000	2715	2510	2350	kg
									3000	2715	2510	2350	kg

31,7 m	3,1	▶	15,7	18	20	22	24	26	28,1	30	31,7	m
			6000	5110	4505	4020	3625	3295	3000	2780	2600	kg
									3000	2780	2600	kg



32 m	3,1	▶	13,7	16	18	20	22	24,3	26	28	30	32	m
			6000	4985	4320	3805	3390	3000	2770	2530	2325	2150	kg
								3000	2770	2530	2325	2150	kg

Flèche relevée  
Ausleger in Steilstellung  
Luffing jib  
Flecha izada  
Braccio impennato  
Lança inclinada  
Маховая стрела

MEM 4

45 m	▶	19,5	22	24	26	28	30	32	34	36	38	39	m	
			3000	2595	2325	2105	1920	1760	1620	1500	1390	1295	1250	kg
40 m	▶	21,5	24	26	28	30	32	34,8	m					
			3000	2625	2375	2170	1990	1835	1650	kg				
33,8 m	▶	24	26	28	29,3	m								
			3000	2720	2485	2350	kg							
31,7 m	▶	24,5	26	27,6	m									
			3000	2795	2600	kg								

31,7 m	▶	21	22	24	26	27,6	m	
			3000	2845	2555	2315	2150	kg

MEM (m)	45	40	33,8	31,7
H+2	-	-	-	-
H+1	51	48,5	45,4	44,4
H+0	48	45,5	42,4	41,4
	45	42,5	39,4	38,4
	42	39,5	36,4	35,4
	-	-	-	-

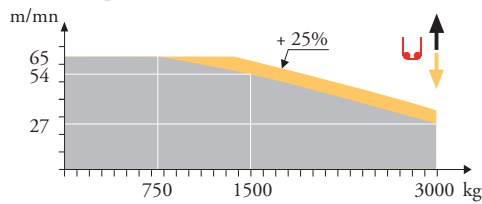
- **FR** Réactions en service
- **FR** Réactions hors service
- 🚚 **FR** A vide sans lest (ni train de transport) avec flèche et hauteur maximum.
- 🚚 **FR** Poids total du lest
- **DE** Reaktionskräfte in Betrieb
- **DE** Reaktionskräfte außer Betrieb
- 🚚 **DE** Ohne Last, Ballast (und Transportachse), mit Maximalausleger und Maximalhöhe.
- 🚚 **DE** Ballast-Gesamtgewicht.
- **EN** Reactions in service
- **EN** Reactions out of service
- 🚚 **EN** Without load, ballast (und transport axes), with maximum jib and maximum height.
- 🚚 **EN** Gross ballast weight.
- **ES** Reacciones en servicio
- **ES** Reacciones fuera de servicio
- 🚚 **ES** Sin carga, sin lastre, (ni tren de transporte), flecha y altura máxima.
- 🚚 **ES** Peso total del lastre.
- **IT** Reazioni in servizio
- **IT** Reazioni fuori servizio
- 🚚 **IT** A vuoto, senza zavorra (ne assali di trasporto) con braccio massimo e altezza massima.
- 🚚 **IT** Peso totale della zavorra.
- **PT** Reações em serviço
- **PT** Reações fora de serviço
- 🚚 **PT** Sem carga (nem trem de transporte)- sem lastro com lança e altura máximas.
- 🚚 **PT** Peso total do lastro.
- **RU** Реакции при работе
- **RU** Реакции в покое
- 🚚 **RU** Вес без груза, балласта (или транспортных осей), с максимальной длиной стрелы и максимальной высотой.
- 🚚 **RU** общий вес груза

Mécanismes  
Antriebe  
Mechanisms  
Mecanismos  
Meccanismi  
Mecanismos  
Механизмы

MEM 3

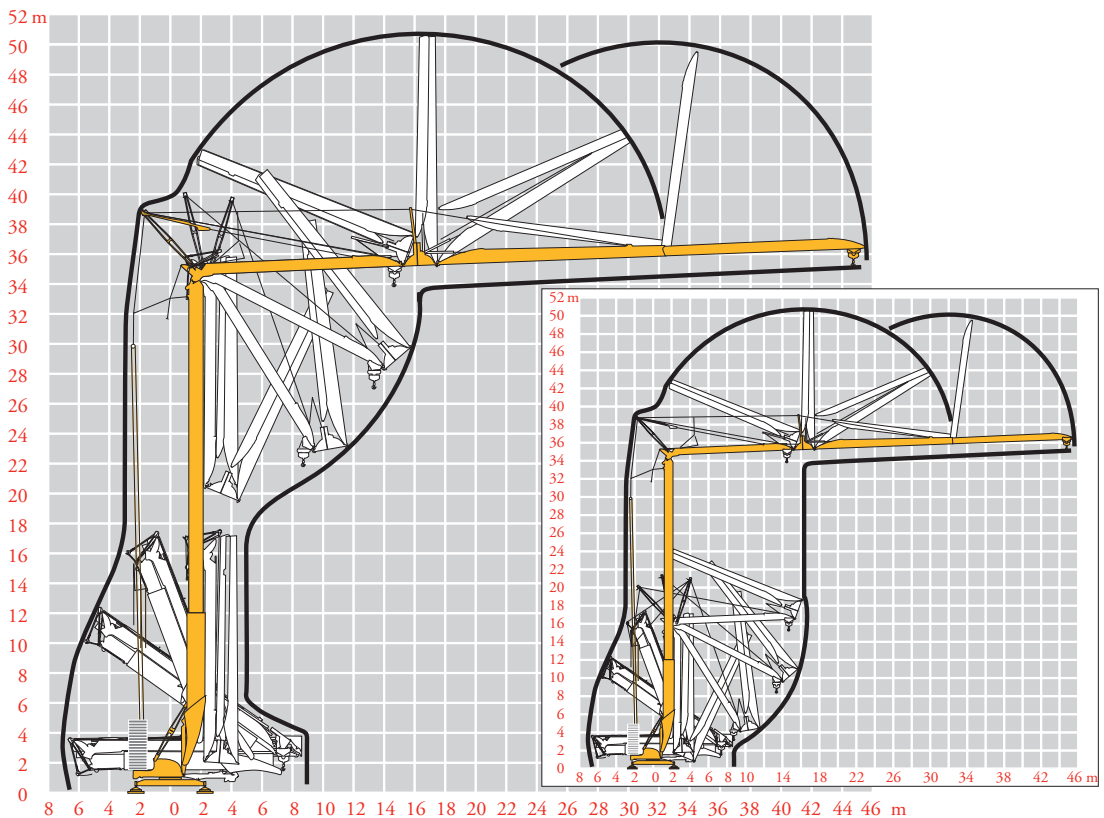
		U					UU					ch-PS hp	kW	
⬆	<b>20 LVF 15 Optima</b>	m/min	3,2	16	27	54	65	1,6	8	13,5	27	32,5	20	15
		kg	3000	3000	3000	1500	750	6000	6000	6000	3000	1500		
⬆	<b>5 DVF 5</b>	m/min	15 - 30 - 55 (0 → 2000 kg) - 15 - 30 - 40 (2000 → 6000 kg)										5,5	4
⬆	<b>RVF 51 Optima +</b>	α/min U/min - rpm	0 → 0,8										5,5	4
⬆	<b>TVF 324</b>	m/min	25										2 x 4	2 x 3
<b>IEC 60204-32</b>						<b>kVA</b>								
400 V (+10% -10%) 50 Hz						20 LVF 15 : 31 kVA								
480 V (+6% -10%) 60 Hz						20 LVF 15 : 31 kVA								

**20 LVF 15 Optima**



Montage  
Montage  
Erection  
Montaje  
Montaggio  
Montagem  
Монтаж

MEM 3



**FR**

- ⬆ Leverage
- ⬆ Distribution
- ⬆ Orientation
- ⬆ Translation
- i Nous consulter

**DE**

- Heben
- Katzfahren
- Schwenken
- Kranfahren
- Auf Anfrage

**EN**

- Hoisting
- Trolleying
- Slewing
- Travelling
- Consult us

**ES**

- Elevación
- Distribución
- Orientación
- Traslación
- Consultarnos

**IT**

- Sollevamento
- Distribuzione
- Rotazione
- Traslazione
- Consultateci

**PT**

- Elevação
- Distribuição
- Rotação
- Translação
- Consultar-nos

**RU**

- Подъем
- Перемещение каретки
- Поворот
- Перемещение крана
- Проконсультируйтесь у нас